

Figure 4. ᐅᑭᑦᑕᑲᑦ ᐱᑭᑭᑦᑕᑲᑦ ᐱᑭᑭᑦᑕᑲᑦ (ᑭᑲᑭᑦᑕᑲᑦᑕᑲᑦ) ᑭᑲᑲᑦ ᑭᑲᑲᑦ ᐅᑭᑦᑕᑲᑦ 1990-2000-ᑭᑦ ᐱᑭᑭᑦᑕᑲᑦ ᑭᑲᑲᑦ ᑭᑲᑲᑦ 2011-2015-ᑭᑦ ᐱᑭᑭᑦᑕᑲᑦ ᑭᑲᑲᑦ 1

ᑭᑲᑲᑦᑕᑲᑦ ᑭᑲᑲᑦ

ᑭᑲᑲᑦᑕᑲᑦ ᐱᑭᑭᑦᑕᑲᑦ ᐱᑭᑭᑦᑕᑲᑦ ᑭᑲᑲᑦ, ᐅᑭᑦᑕᑲᑦ. ᐱᑭᑭᑦᑕᑲᑦ ᑭᑲᑲᑦ ᑭᑲᑲᑦ ᑭᑲᑲᑦ, ᑭᑲᑲᑦ, ᑭᑲᑲᑦ ᑭᑲᑲᑦ ᐱᑭᑭᑦᑕᑲᑦ ᐱᑭᑭᑦᑕᑲᑦ ᐱᑭᑭᑦᑕᑲᑦ ᐱᑭᑭᑦᑕᑲᑦ. ᑭᑲᑲᑦ, ᐱᑭᑭᑦᑕᑲᑦ ᑭᑲᑲᑦ ᐱᑭᑭᑦᑕᑲᑦ ᐱᑭᑭᑦᑕᑲᑦ ᐱᑭᑭᑦᑕᑲᑦ.

ᑭᑲᑲᑦᑕᑲᑦ	ᑭᑲᑲᑦ ᑭᑲᑲᑦ ᐱᑭᑭᑦᑕᑲᑦ	ᑭᑲᑲᑦ ᑭᑲᑲᑦ ᐱᑭᑭᑦᑕᑲᑦ
ᐅᑭᑲᑲᑲᑲᑲ	ᑭᑲᑲᑦ ᑭᑲᑲᑦ	ᑭᑲᑲᑦ ᑭᑲᑲᑦ ᐱᑭᑭᑦᑕᑲᑦ
ᐅᑭᑲᑲᑲᑲᑲ	ᑭᑲᑲᑦ ᑭᑲᑲᑦ	ᑭᑲᑲᑦ ᑭᑲᑲᑦ ᐱᑭᑭᑦᑕᑲᑦ
ᐅᑭᑲᑲᑲᑲᑲ	ᑭᑲᑲᑦ ᑭᑲᑲᑦ ᐱᑭᑭᑦᑕᑲᑦ	ᑭᑲᑲᑦ ᑭᑲᑲᑦ ᐱᑭᑭᑦᑕᑲᑦ
ᐅᑭᑲᑲᑲᑲᑲ	ᑭᑲᑲᑦ ᑭᑲᑲᑦ ᐱᑭᑭᑦᑕᑲᑦ	ᑭᑲᑲᑦ ᑭᑲᑲᑦ ᐱᑭᑭᑦᑕᑲᑦ
ᑭᑲᑲᑦᑕᑲᑲᑲᑲ	ᑭᑲᑲᑦ	ᑭᑲᑲᑦ ᑭᑲᑲᑦ ᐱᑭᑭᑦᑕᑲᑦ



ᐱᑦᐸᐅᑦ ᐃᑦᐸᑦᓂᑦᑲᑦᑲᑦᑲᑦ ᑭᑦᑲᑦᓂᑦ ᐱᑦᐸᐅᑦ

ᐱᑦᐸᐅᑦ ᐱᑦᐸᑦᓂᑦᑲᑦᑲᑦᑲᑦ ᐱᑦᐸᐅᑦ ᐱᑦᐸᐅᑦ ᐱᑦᐸᐅᑦ ᐱᑦᐸᐅᑦ ᐱᑦᐸᐅᑦ ᐱᑦᐸᐅᑦ.

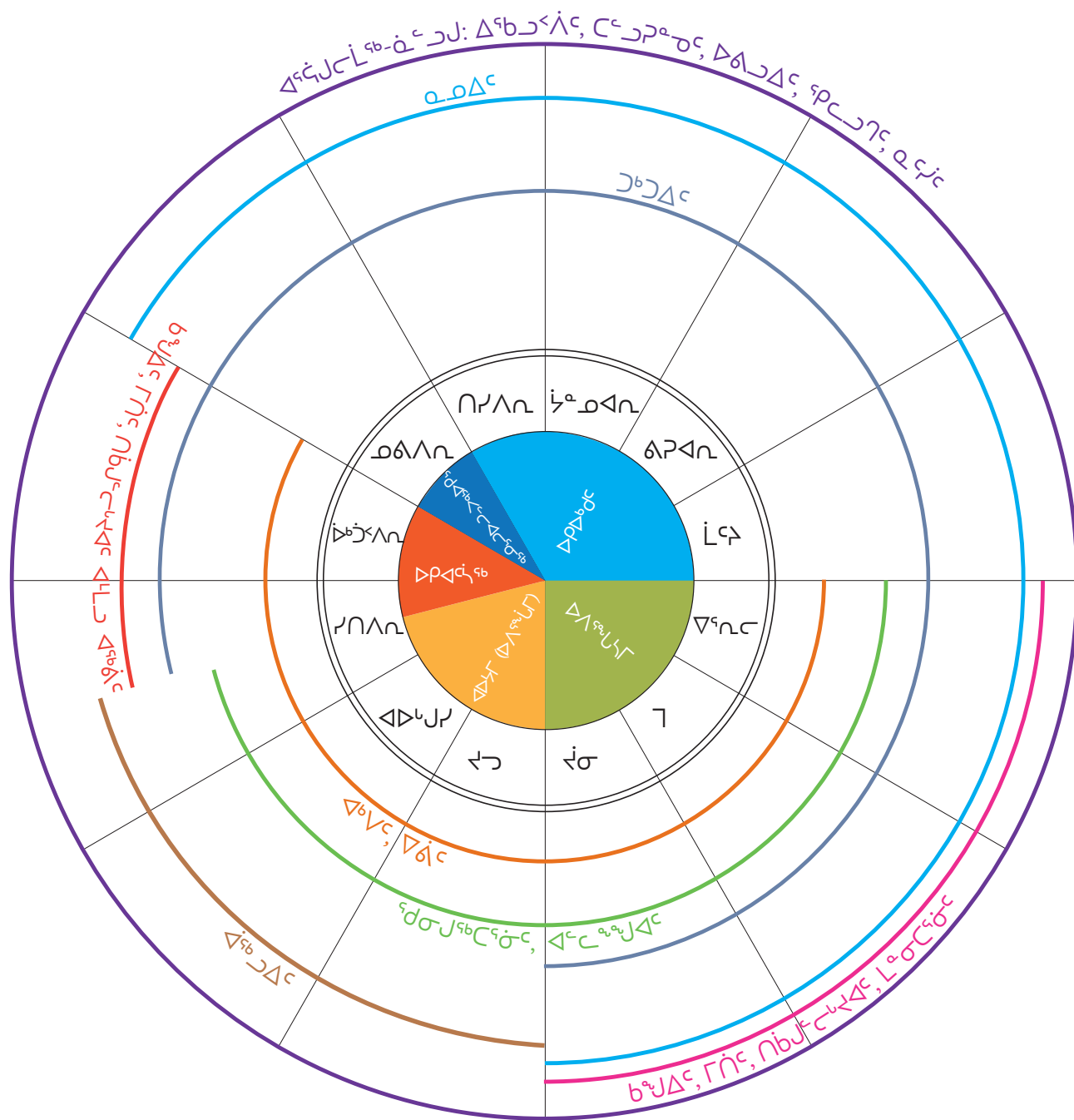


Figure 5. ᐱᑦᐸᐅᑦ ᐱᑦᐸᑦᓂᑦᑲᑦᑲᑦᑲᑦ ᐱᑦᐸᐅᑦ ᐱᑦᐸᐅᑦ ᐱᑦᐸᐅᑦ ᐱᑦᐸᐅᑦ ᐱᑦᐸᐅᑦ ᐱᑦᐸᐅᑦ

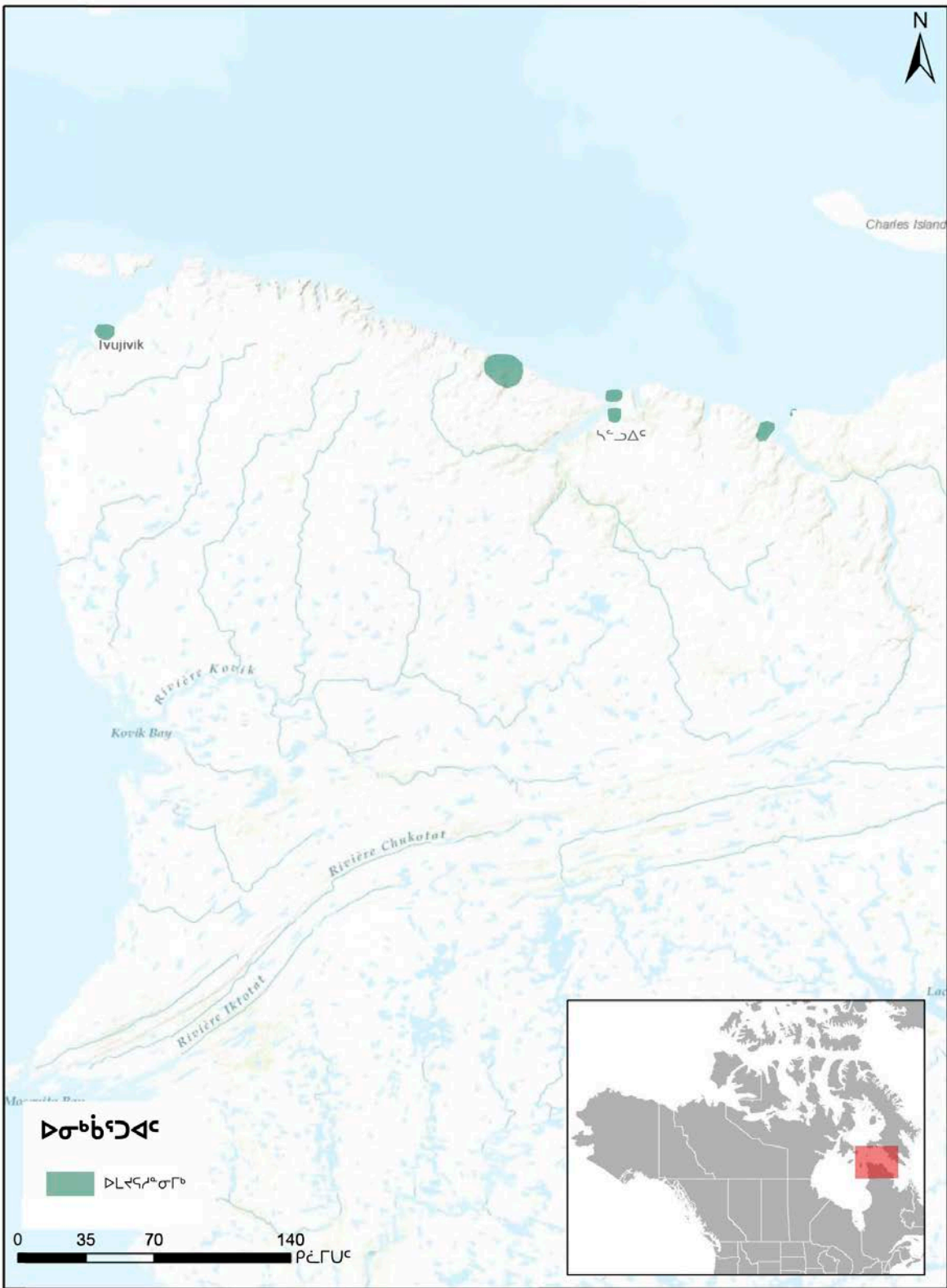


Figure 7. ወደሎሽ ልረብህዳሪ ለዲፖሎይሜትሪክ ምርመራዎች የተመረጡት ስምጥራዊ ስፔሻል ድንበሮች

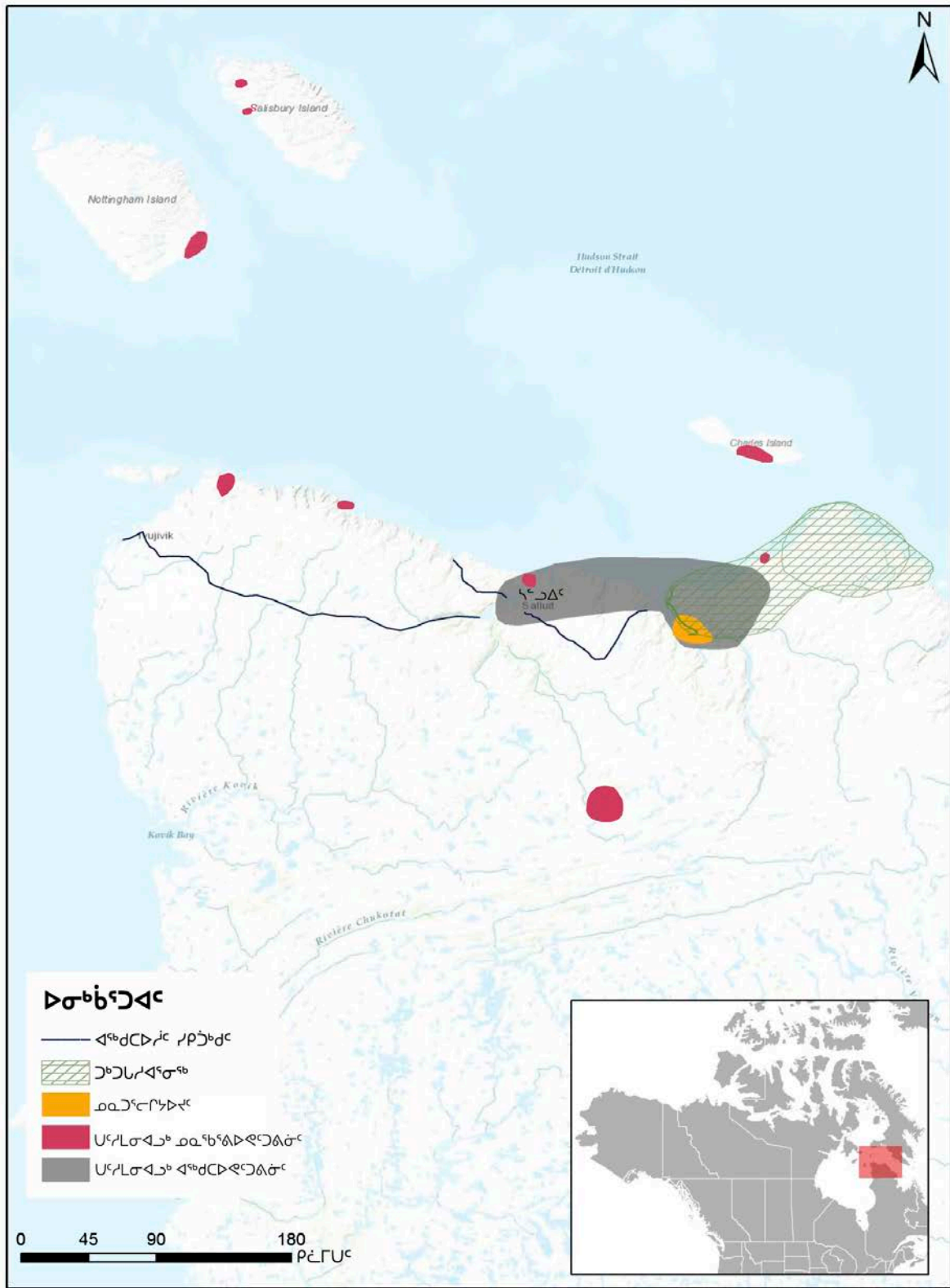


Figure 8. ᓄᓄᐅᐅᐅ ᐅᐅᐅᐅᐅᐅ ᐅᐅᐅᐅᐅᐅ ᐅᐅᐅᐅᐅᐅ ᐅᐅᐅᐅᐅᐅ ᐅᐅᐅᐅᐅᐅ ᐅᐅᐅᐅᐅᐅ ᐅᐅᐅᐅᐅᐅ

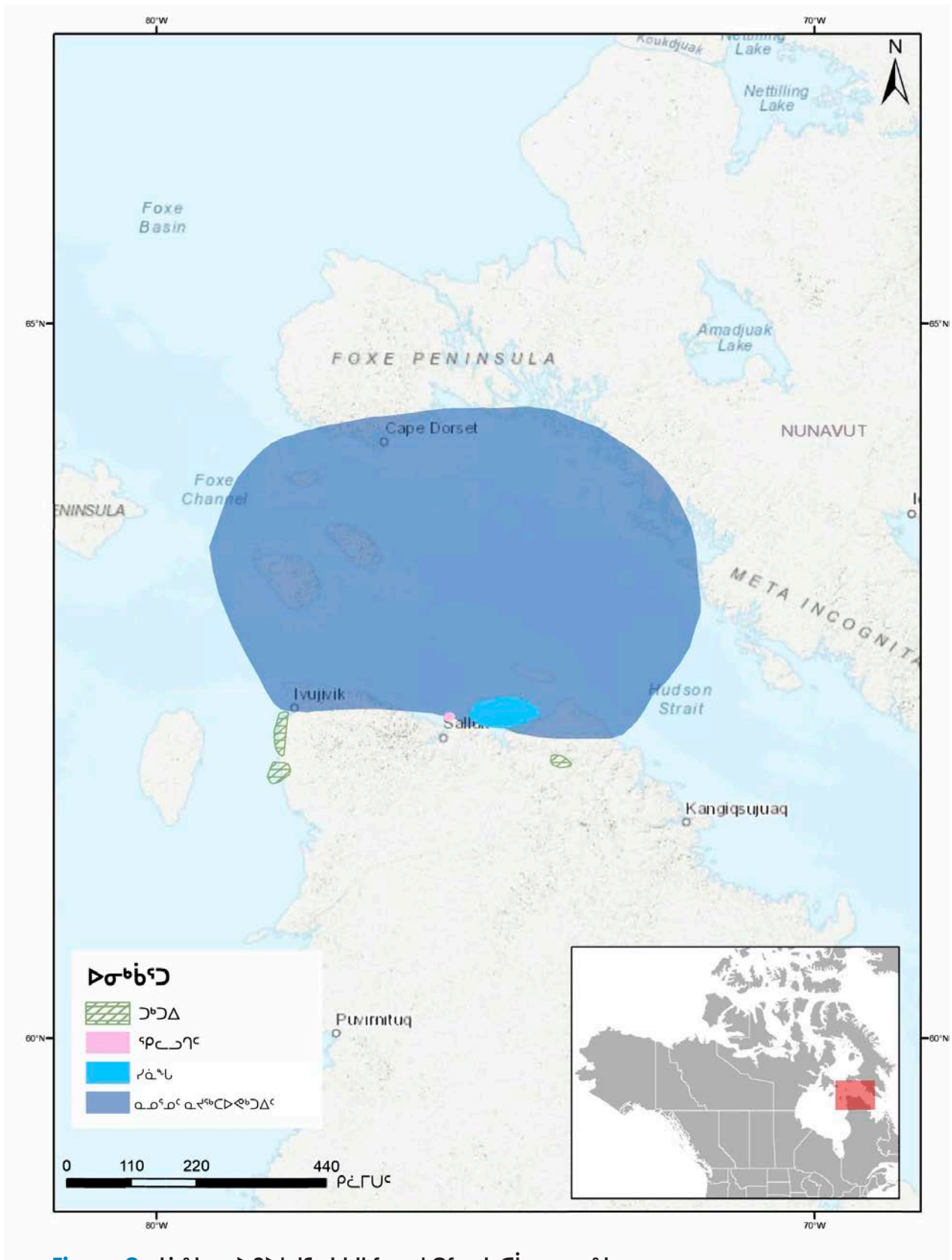


Figure 9. ᐃᐅᐅᐅᐅᐅᐅᐅᐅᐅᐅ ᐃᐅᐅᐅᐅᐅᐅᐅᐅᐅᐅ ᐃᐅᐅᐅᐅᐅᐅᐅᐅᐅᐅᐅᐅ

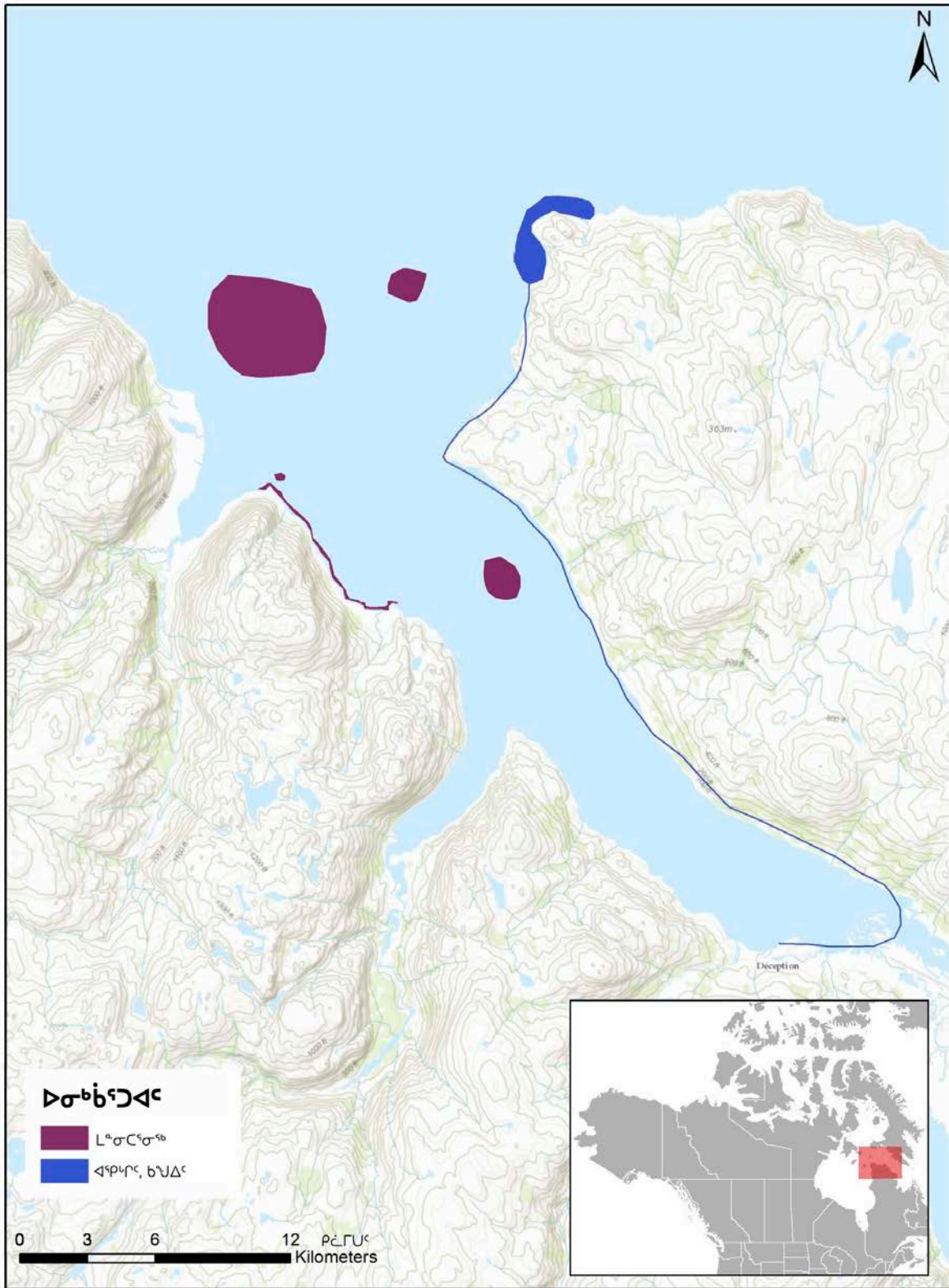


Figure 10. ᐃᓂᑲᑦᐅᐸᐸ ᐃᓂᑲᑦᐅᐸᐸ ᐃᓂᑲᑦᐅᐸᐸ ᐃᓂᑲᑦᐅᐸᐸ ᐃᓂᑲᑦᐅᐸᐸ ᐃᓂᑲᑦᐅᐸᐸ

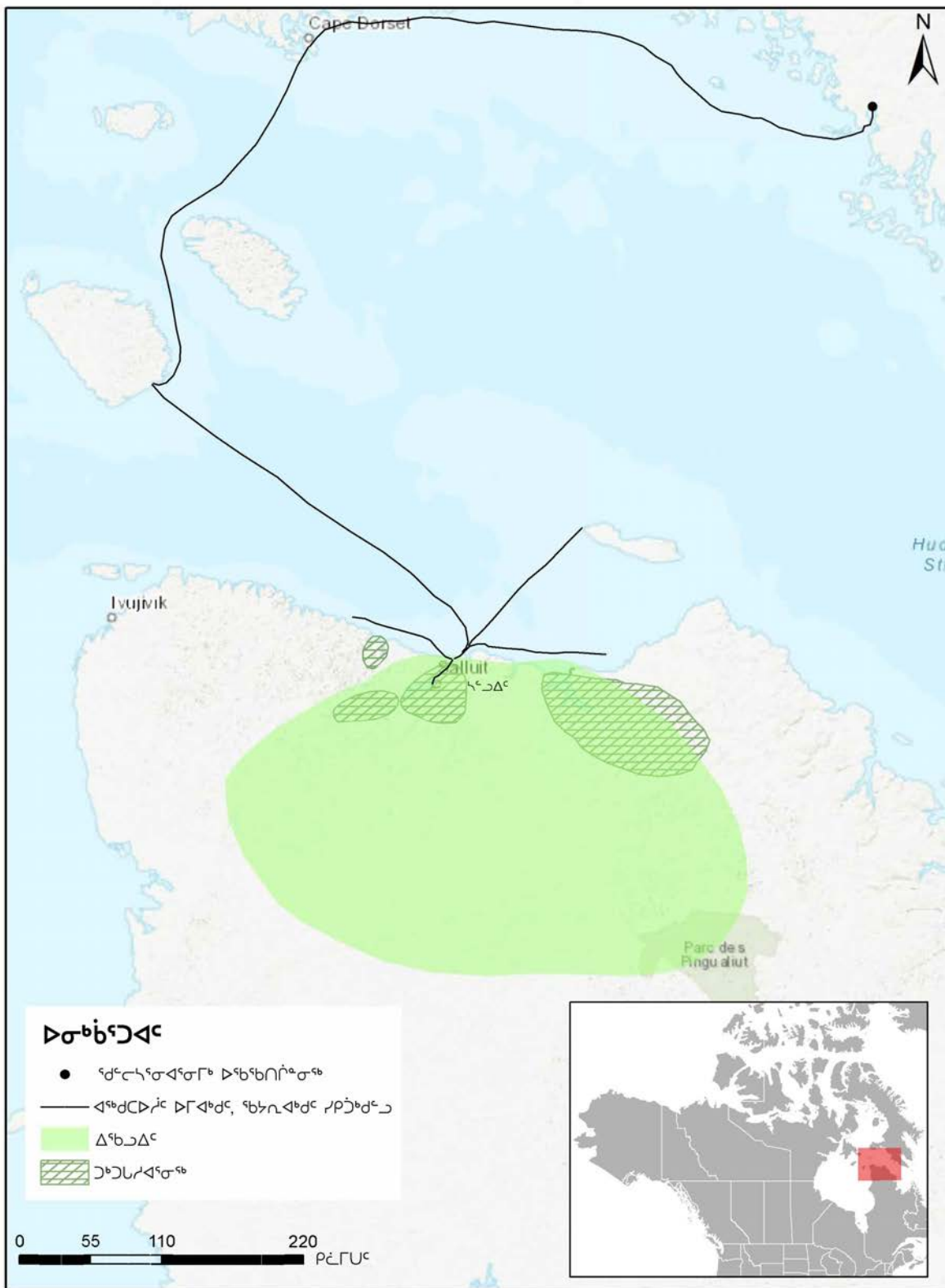


Figure 11. ᓄᐃᓄᓇᓱᐅᐃᐅ ᐃᓄᓄᓇᓱᐅᐃᐅ ᐃᓄᓄᓇᓱᐅᐃᐅ ᐃᓄᓄᓇᓱᐅᐃᐅ ᐃᓄᓄᓇᓱᐅᐃᐅ ᐃᓄᓄᓇᓱᐅᐃᐅ

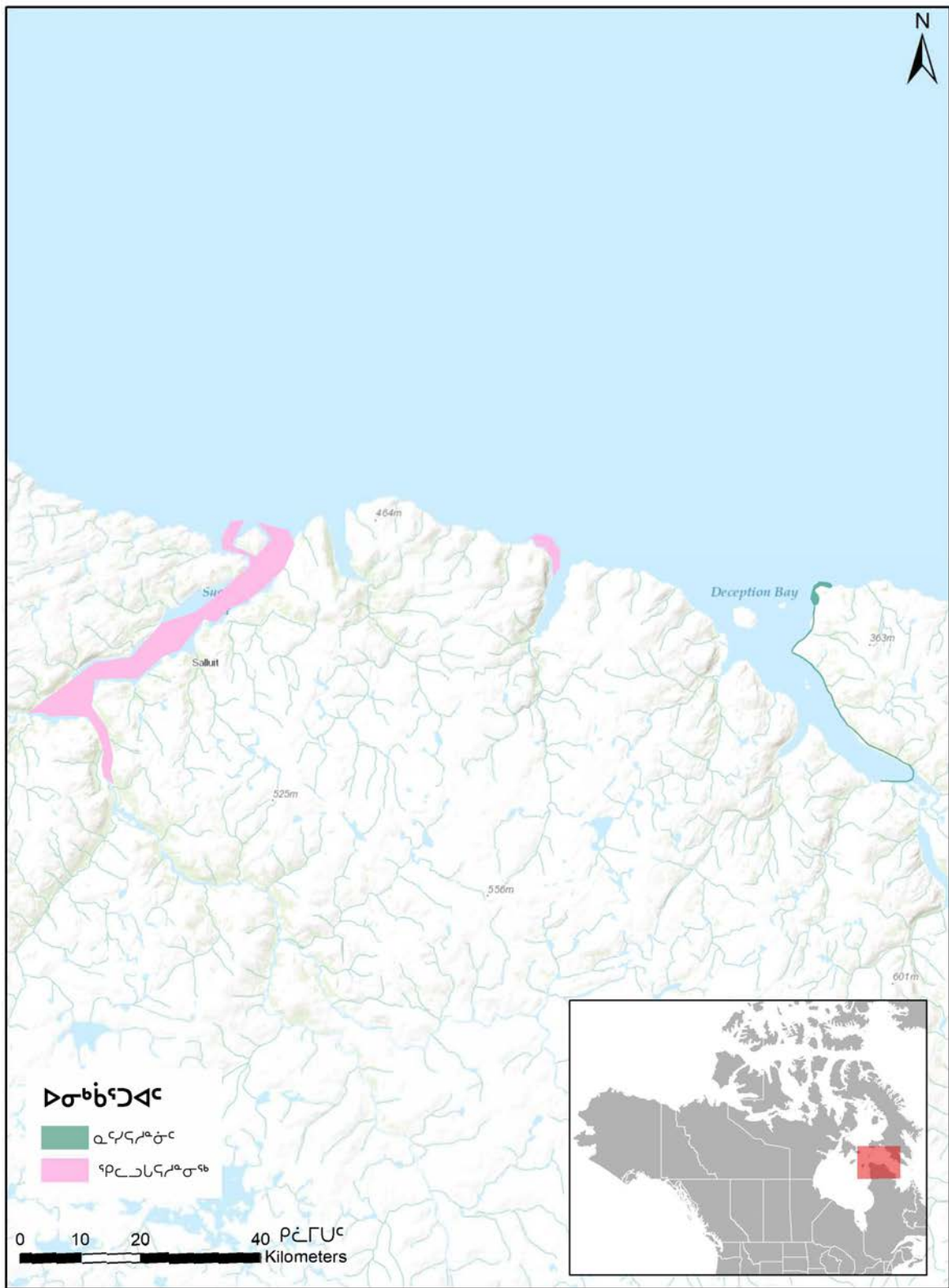


Figure 12. ወደሥራ ልዩነት ለደቡብ ግድብ ደቡብ ግድብ ደቡብ ግድብ ደቡብ ግድብ ደቡብ ግድብ

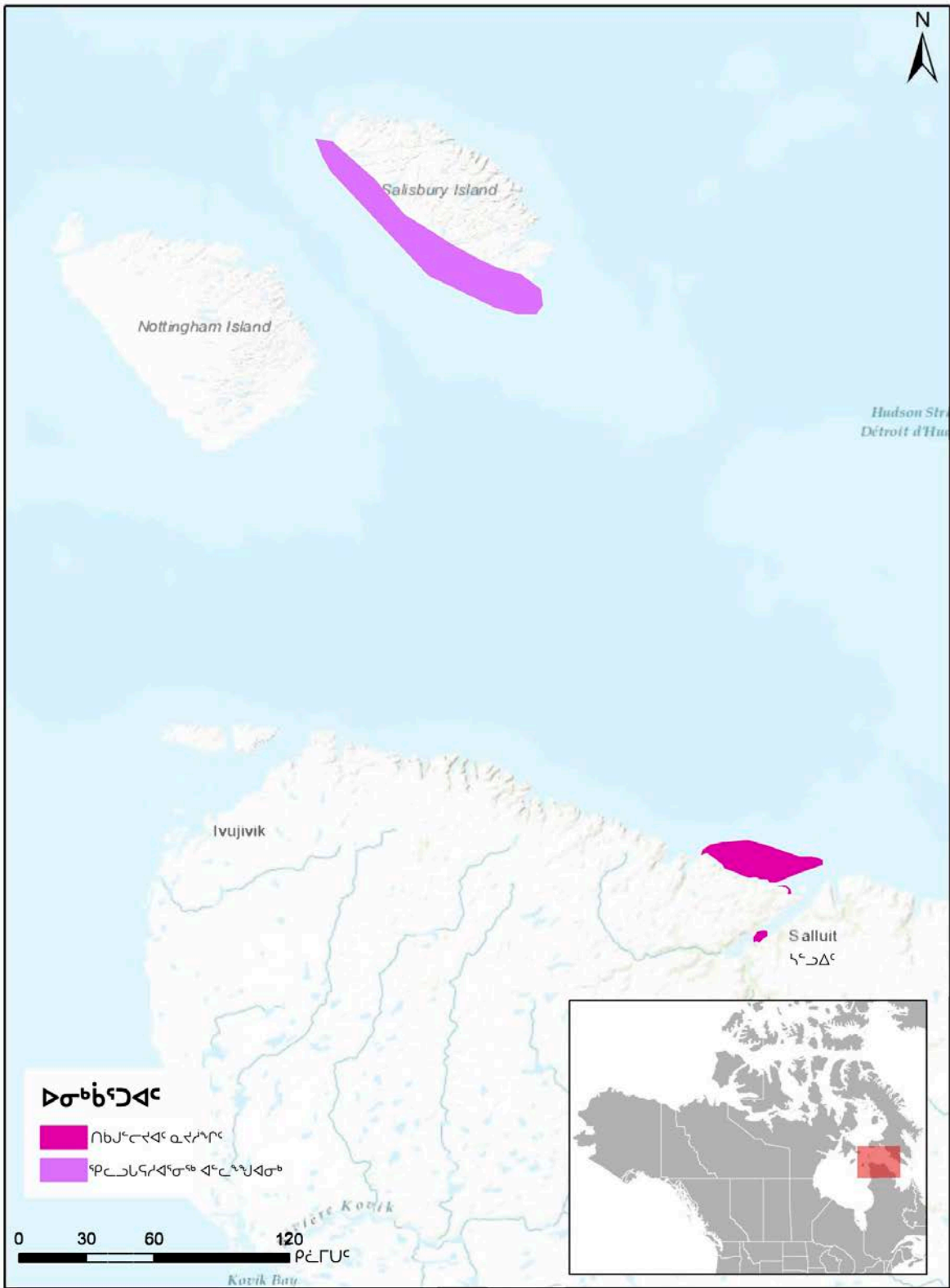


Figure 15. ᓄᓗᓗᓗᑦ ᐅᓂᓗᓗᑦ ᓄᓗᓗᓗᑦ ᓄᓗᓗᓗᑦ ᓄᓗᓗᓗᑦ ᓄᓗᓗᓗᑦ ᓄᓗᓗᓗᑦ ᓄᓗᓗᓗᑦ

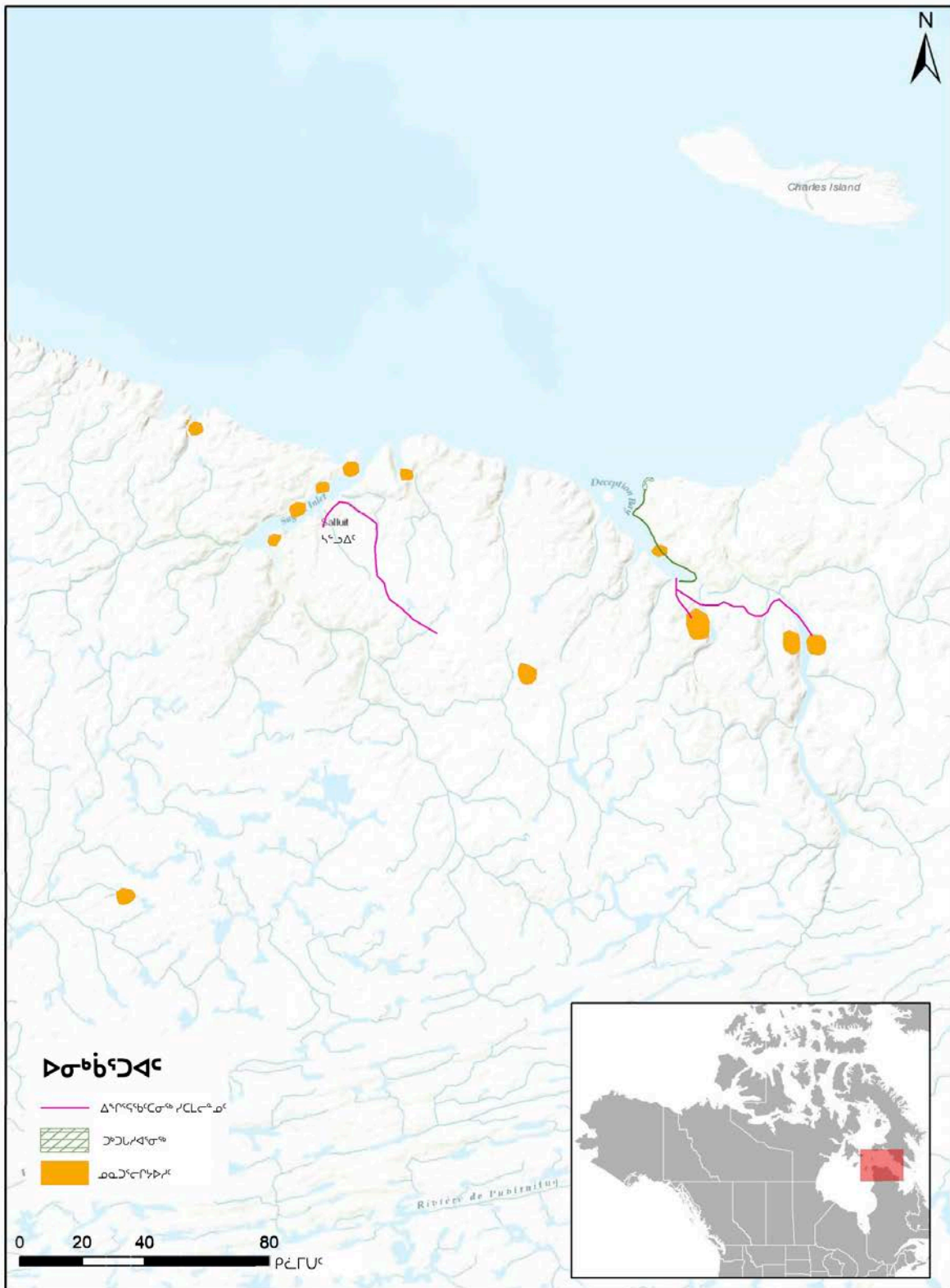


Figure 17. Δορυφορικό Δεδομένο Λογισμικού Γεωγραφικού Συστήματος Πληροφορικής Χωρομετρίας και Δορυφορικών Εικόνων

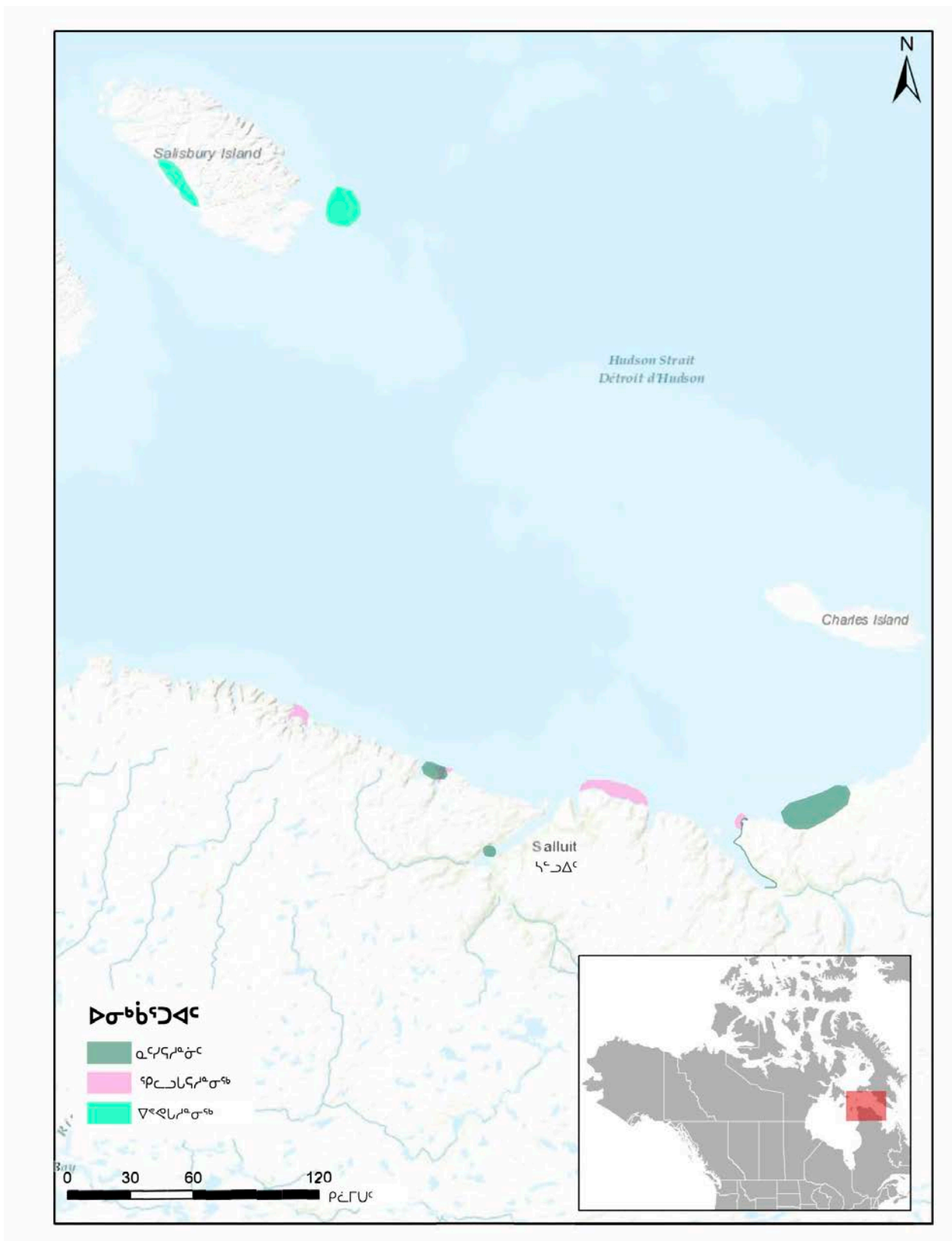


Figure 18. ᓂᓂᓂᓐᓂᓐ ᐃᓂᓂᓐᓂᓐ ᐃᓂᓂᓐᓂᓐ ᐅᓂᓂᓐᓂᓐ ᐅᓂᓂᓐᓂᓐ (ᐅᓂᓂᓐᓂᓐ) ᐃᓂᓂᓐᓂᓐ ᓂᓂᓂᓐᓂᓐ

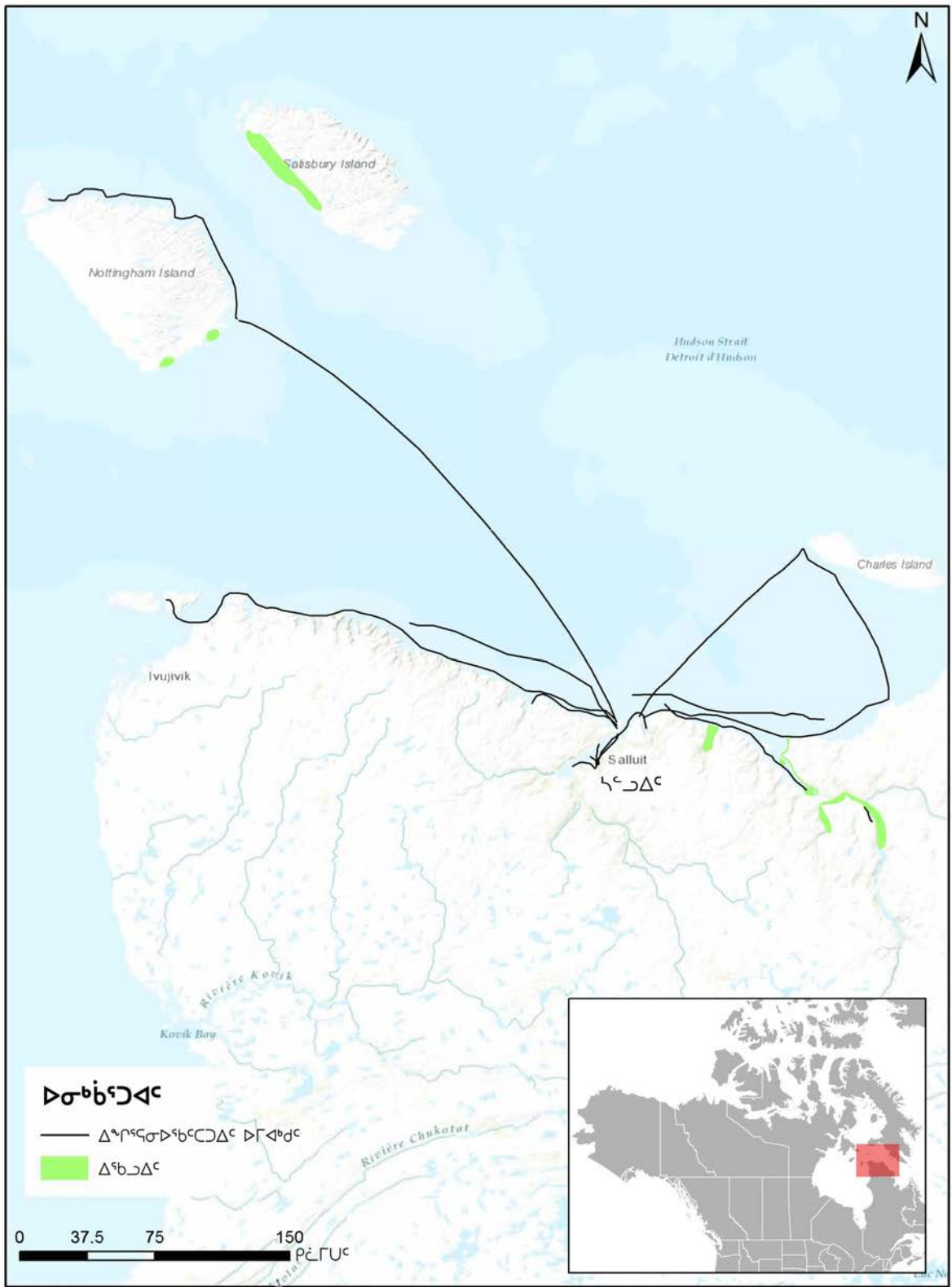


Figure 19. ማዕከላዊ ልሳን-ባህር ለግብርናው ማስተካከያ (ፖለቲካ) ለፍትህ ጥያቄዎች



Figure 20. ᓄᓇᓴᓄᓂ ᐃᓚᒎᓪᓂᓴᓐ ᐱᓇᓴᓂᓃᓪᓵᓂᓴᓐ ᐱᓂᓴᓴᓄᓂ (ᐅᐱᓴᓴᓄᓂ) ᐃᓴᓐ ᓴᓂᓐᓃᓪᓵ

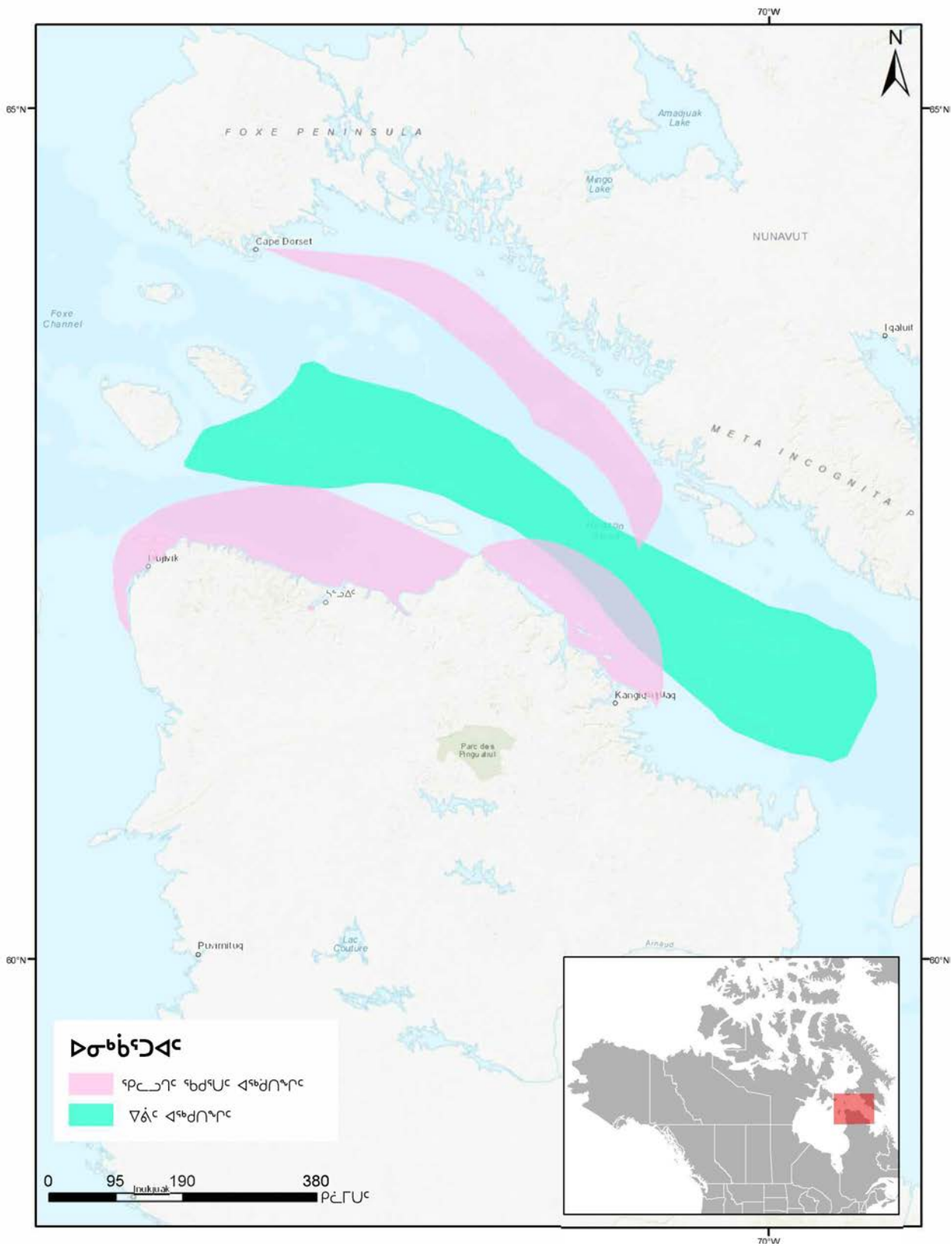


Figure 21. ᓄᓕᓗᓂ ᓆᓕᓗᓂ ᓇᓆᓃᓂᓄᓂ ᓇᓆᓃᓂᓄᓂ ᓇᓆᓃᓂᓄᓂ (ᓇᓆᓃᓂᓄᓂ) ᓇᓆᓃᓂ ᓇᓆᓃᓂᓄᓂᓂᓄᓂ



Figure 22. ᄆᄆᄆᄆ ᄆᄆᄆᄆᄆᄆ ᄆᄆᄆᄆᄆᄆ ᄆᄆᄆᄆ (ᄆᄆᄆᄆᄆ) ᄆᄆᄆ ᄆᄆᄆᄆᄆᄆᄆᄆᄆ

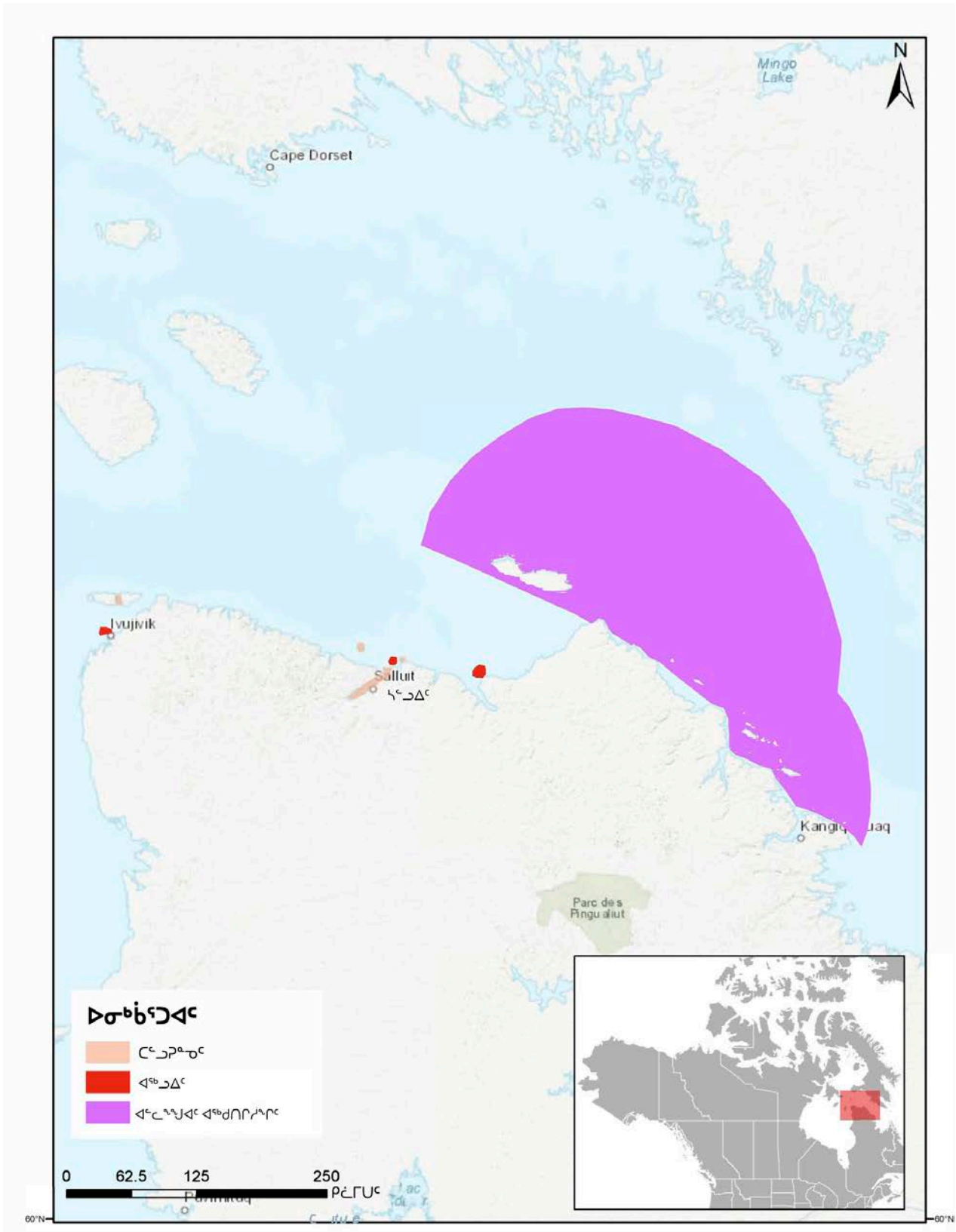


Figure 23. ᓂᓐᓂᓐᓂᓐ ᐱᓐᓂᓐᓂᓐ ᐱᓐᓂᓐᓂᓐ ᐱᓐᓂᓐᓂᓐ ᐱᓐᓂᓐᓂᓐ ᐱᓐᓂᓐᓂᓐ ᐱᓐᓂᓐᓂᓐ

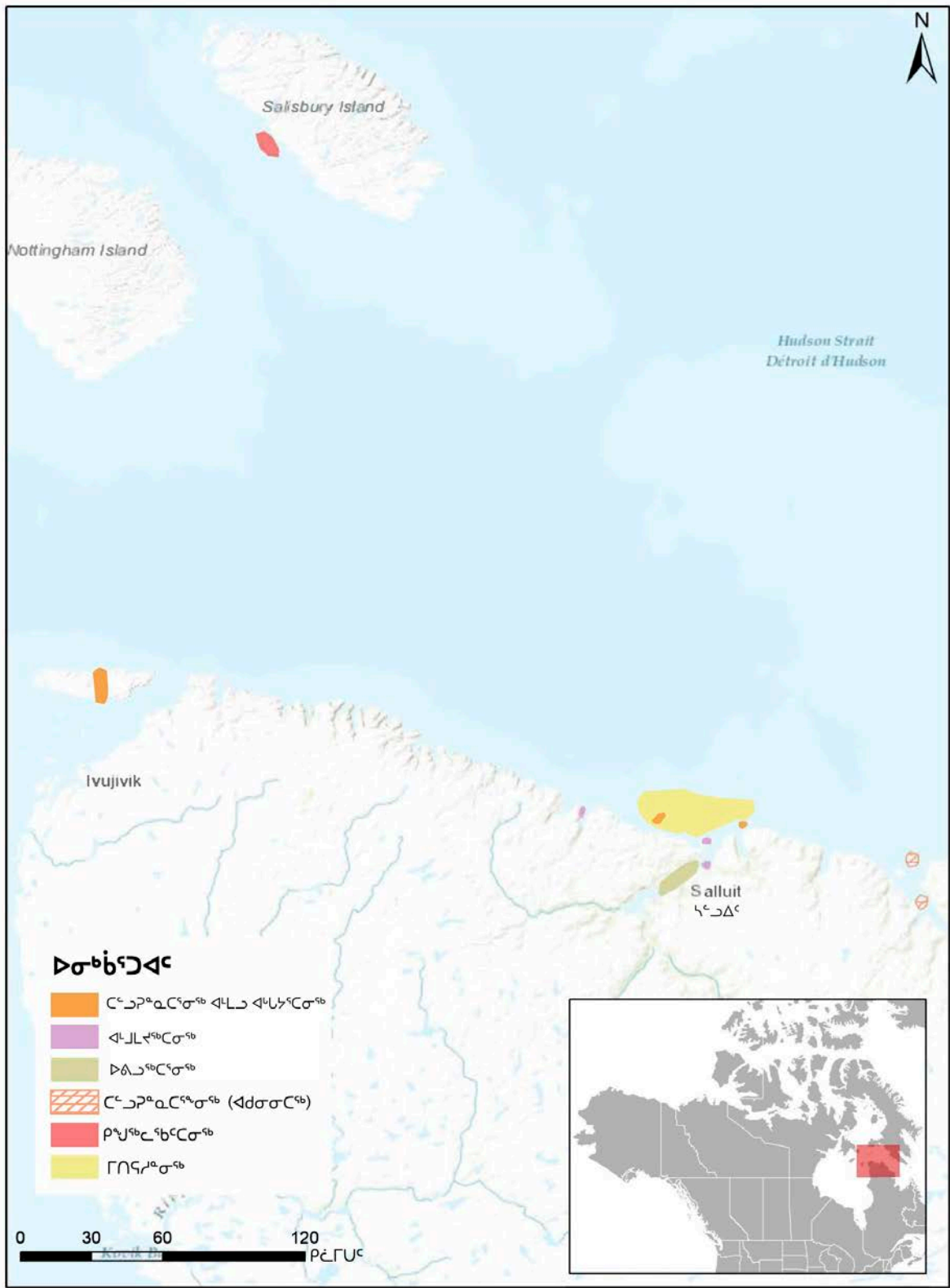


Figure 24. ᓄᓄᓄᓄᓄ ᓄᓄᓄᓄᓄᓄ ᓄᓄᓄᓄᓄᓄᓄ ᓄᓄᓄᓄᓄᓄᓄ ᓄᓄᓄᓄᓄᓄᓄ ᓄᓄᓄᓄᓄᓄᓄᓄ ᓄᓄᓄᓄᓄᓄᓄᓄᓄᓄᓄ

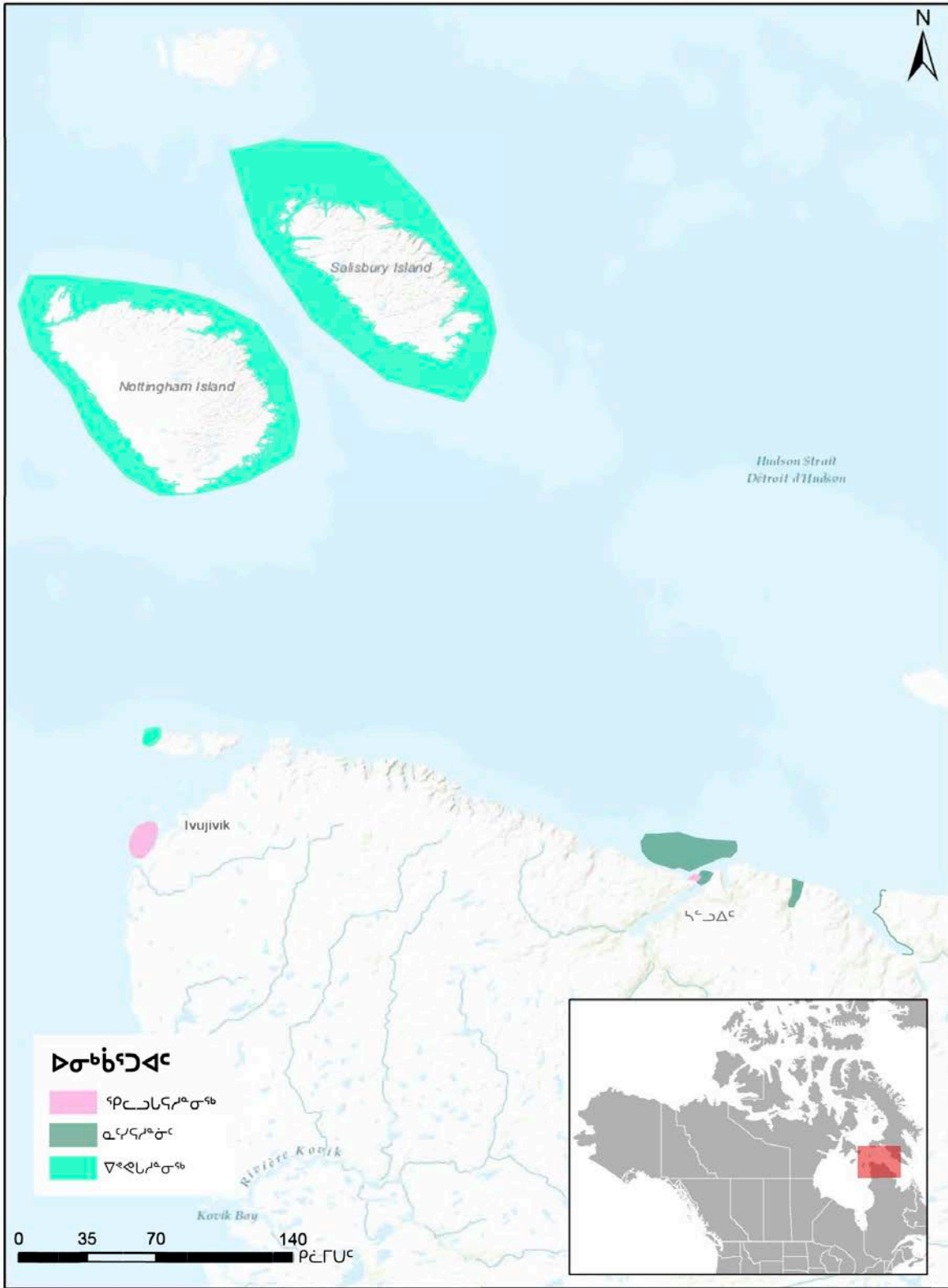


Figure 25. ሙሉ ልዩ ልዩ ለደብዳቤ ለግብይት ለፍጥረት ለግብይት ለፍጥረት ለግብይት ለፍጥረት

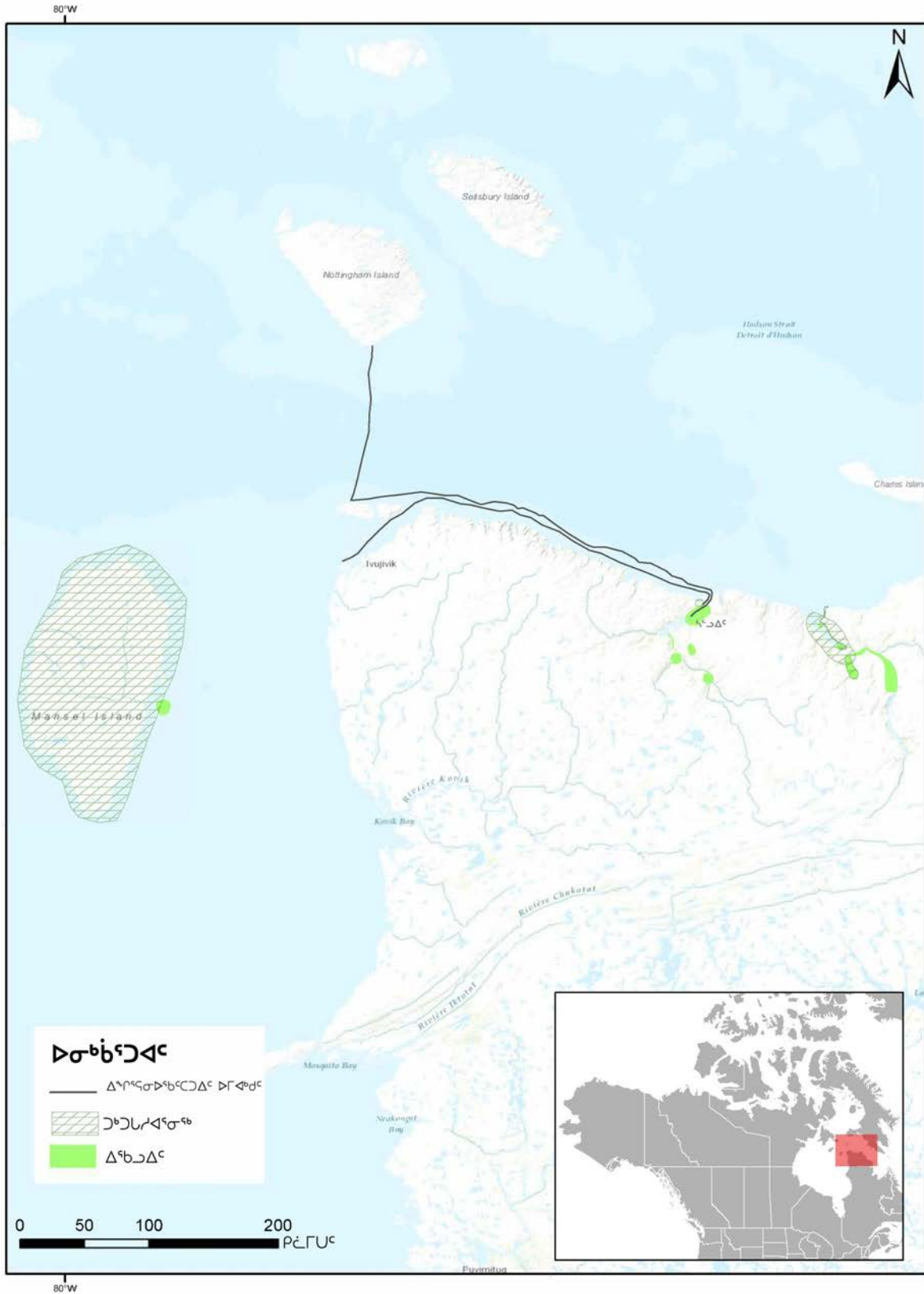


Figure 26. ልምናግድግዳ ልምናግድግዳ ግድግዳ ግድግዳ ግድግዳ ግድግዳ

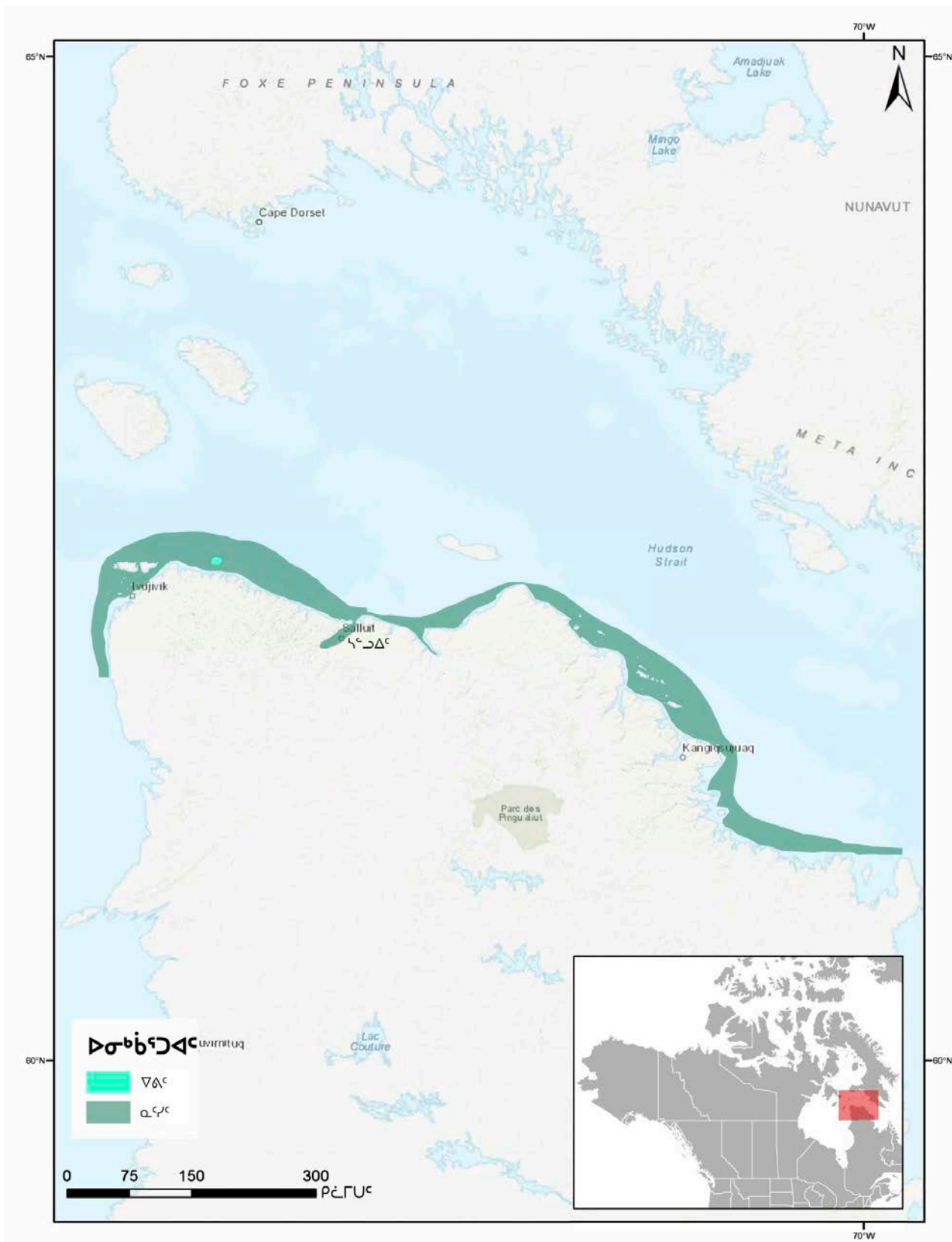


Figure 28. ᓄᐅᓕᓗᓂ ᐱᐅᓕᖅᓴᖅᓴᖅ ᐅᐱᓴᖅᓴᖅᓴᖅ ᐅᓕᖅᓴᖅᓴᖅ ᓴᓕ ᐃᓴᖅ ᐃᓴᓄᓕᓴᓴ

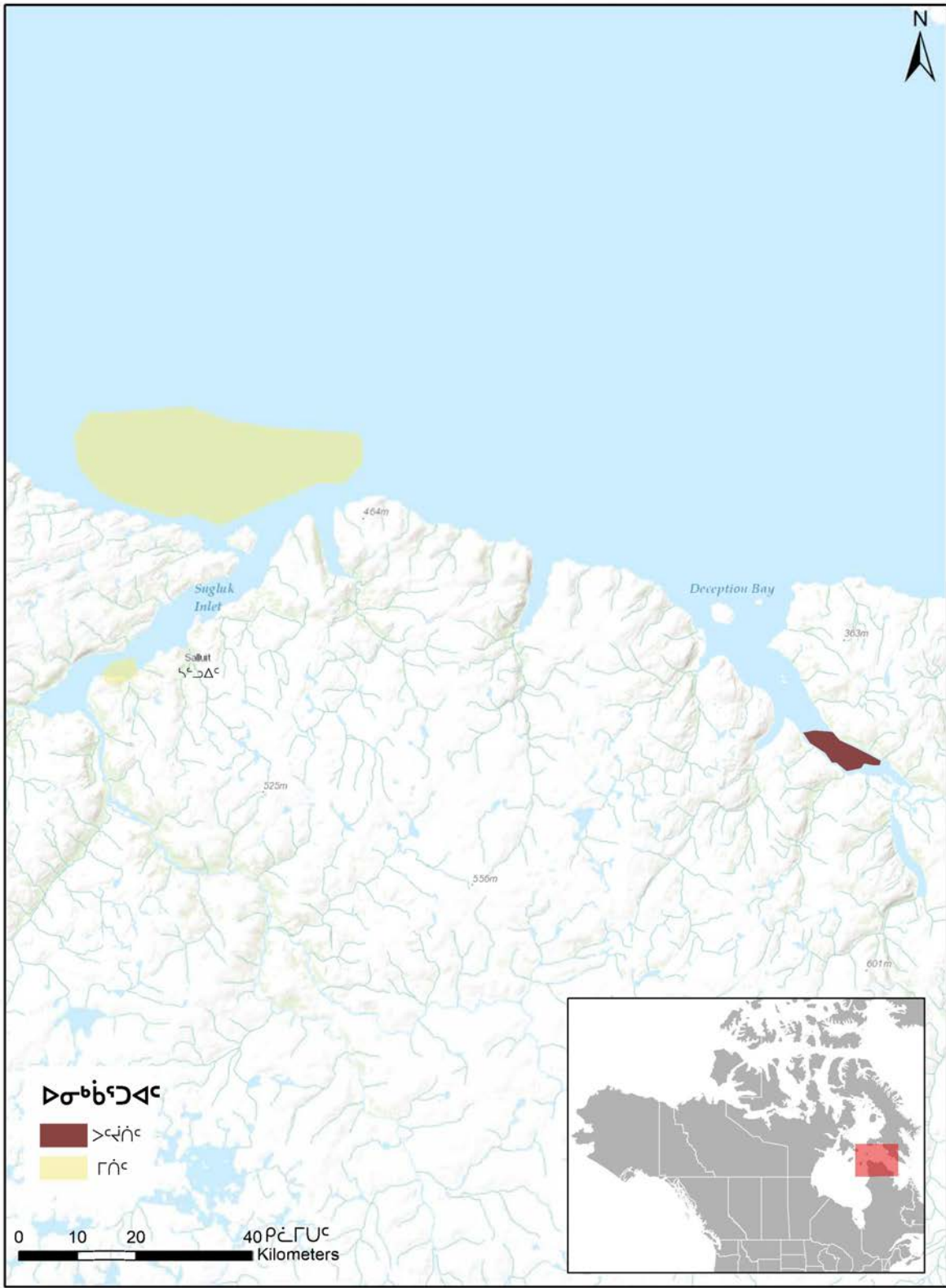


Figure 29. ሙሉ ለሙሉ ለደቡብ አፍሪካ ስድስት ስድስት ዓመት ለውጥ ለውጥ



Figure 30. ማሻሻያ ስራ ለማስፈጸም የሚያስፈልጉ ስራ ወይንም ማስፈጸም ስራ ወይንም ማስፈጸም ስራ

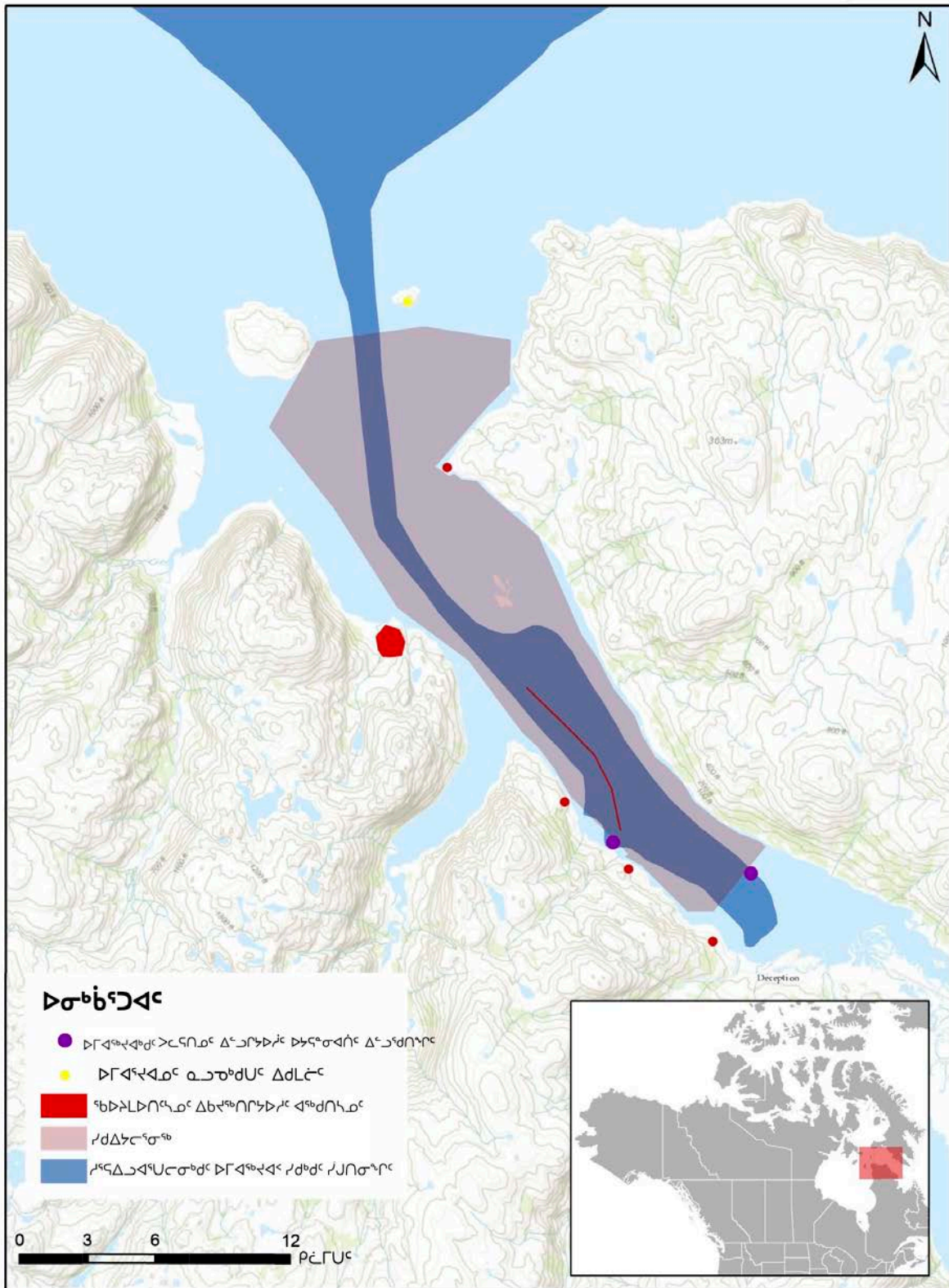


Figure 32. ንጥቅሳታ ለጥቅሳታ ንጥቅሳታ ለጥቅሳታ ለጥቅሳታ ለጥቅሳታ



ወዲካላ ልገረብላጭታ ስፍራ ለግንባታና ልማት ስፈራ

ወዲካላ ስፍራ:

- ስፍራ ለግንባታና ልማት ስፈራ ለማድረግ;
- ለግንባታና ልማት ስፈራ ለማድረግ ለሌሎች ስፍራዎች ለማድረግ;
- ወዲካላ ስፍራ ለማድረግ ለሌሎች ስፍራዎች ለማድረግ;
- ለግንባታና ልማት ስፈራ ለማድረግ ለሌሎች ስፍራዎች ለማድረግ

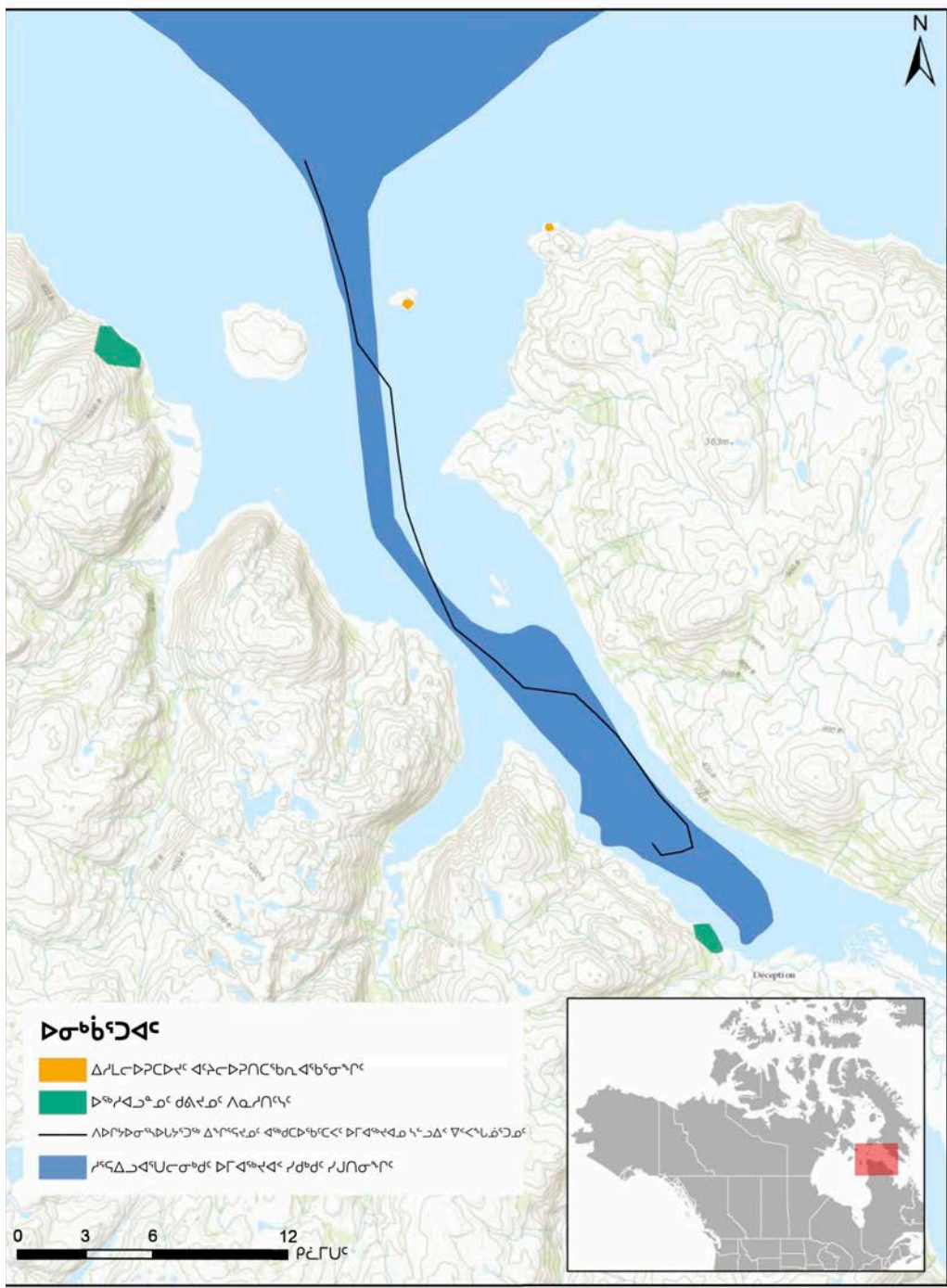


Figure 33. ልገረብላጭታ ስፍራ ለግንባታና ልማት ስፈራ

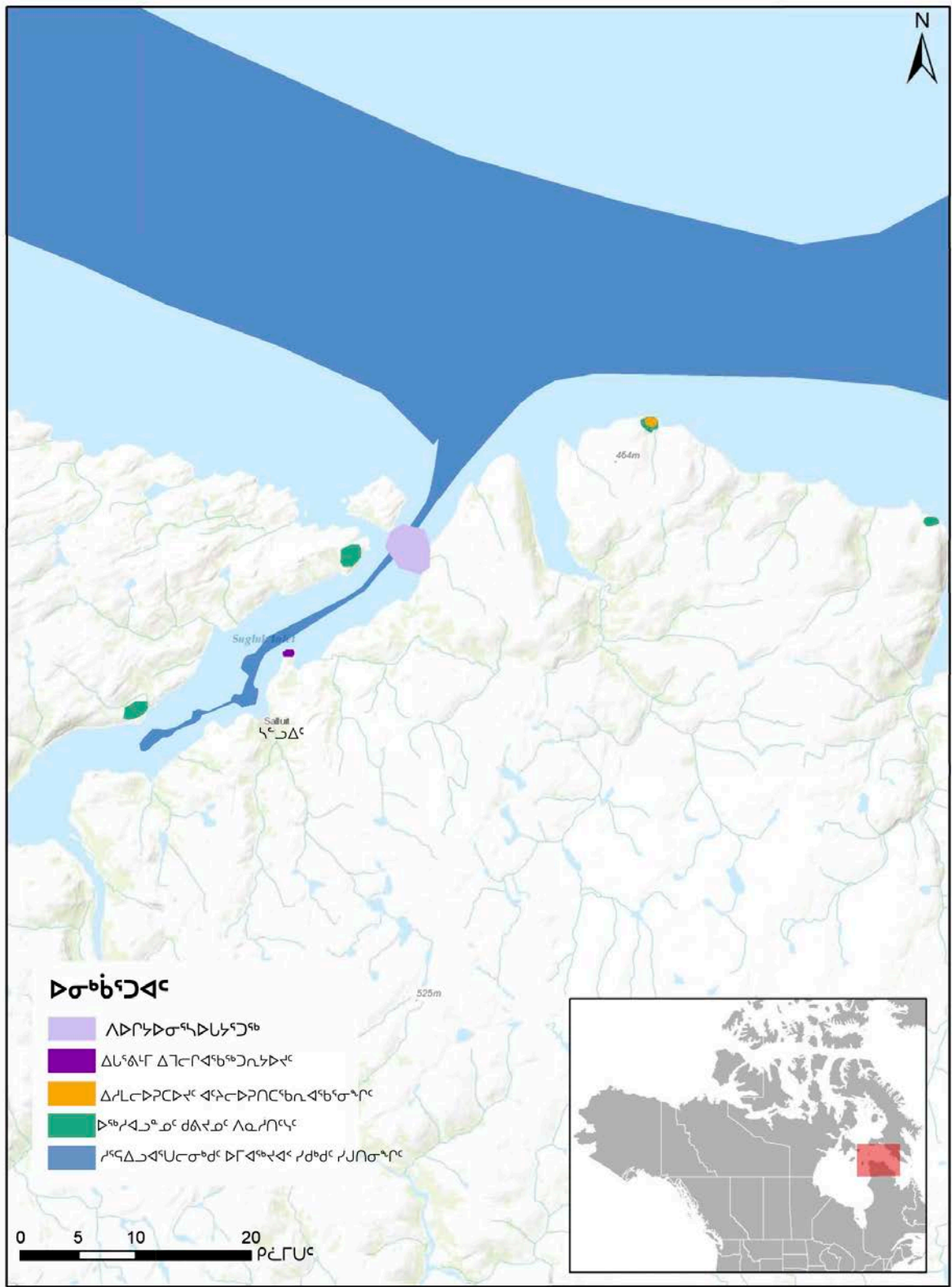


Figure 34. ልገርገርገርገርገርገር ስገርገር ጥንቃቄ



Figure 35. ለግብርና ግብርና ለውስጥ ግብርና ለውስጥ ግብርና ለውስጥ ግብርና

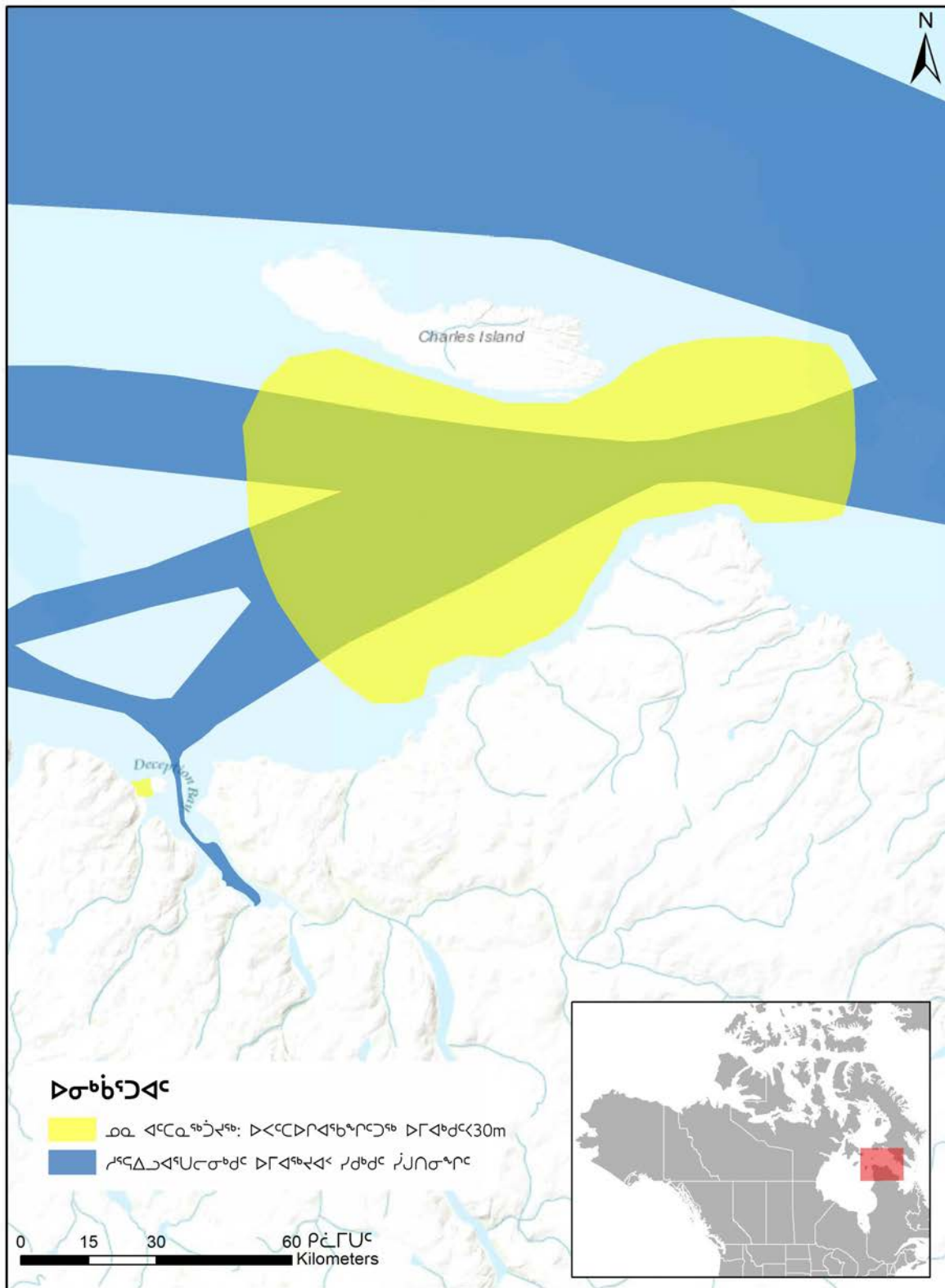


Figure 36. ᐳᐅᓂᓄᓪጋᐳᐅ ᐳᐅᓂᓄᓪጋᐳᐅ ᐳᐅᓂᓄᓪጋᐳᐅ ᐳᐅᓂᓄᓪጋᐳᐅ ᐳᐅᓂᓄᓪጋᐳᐅ ᐳᐅᓂᓄᓪጋᐳᐅ

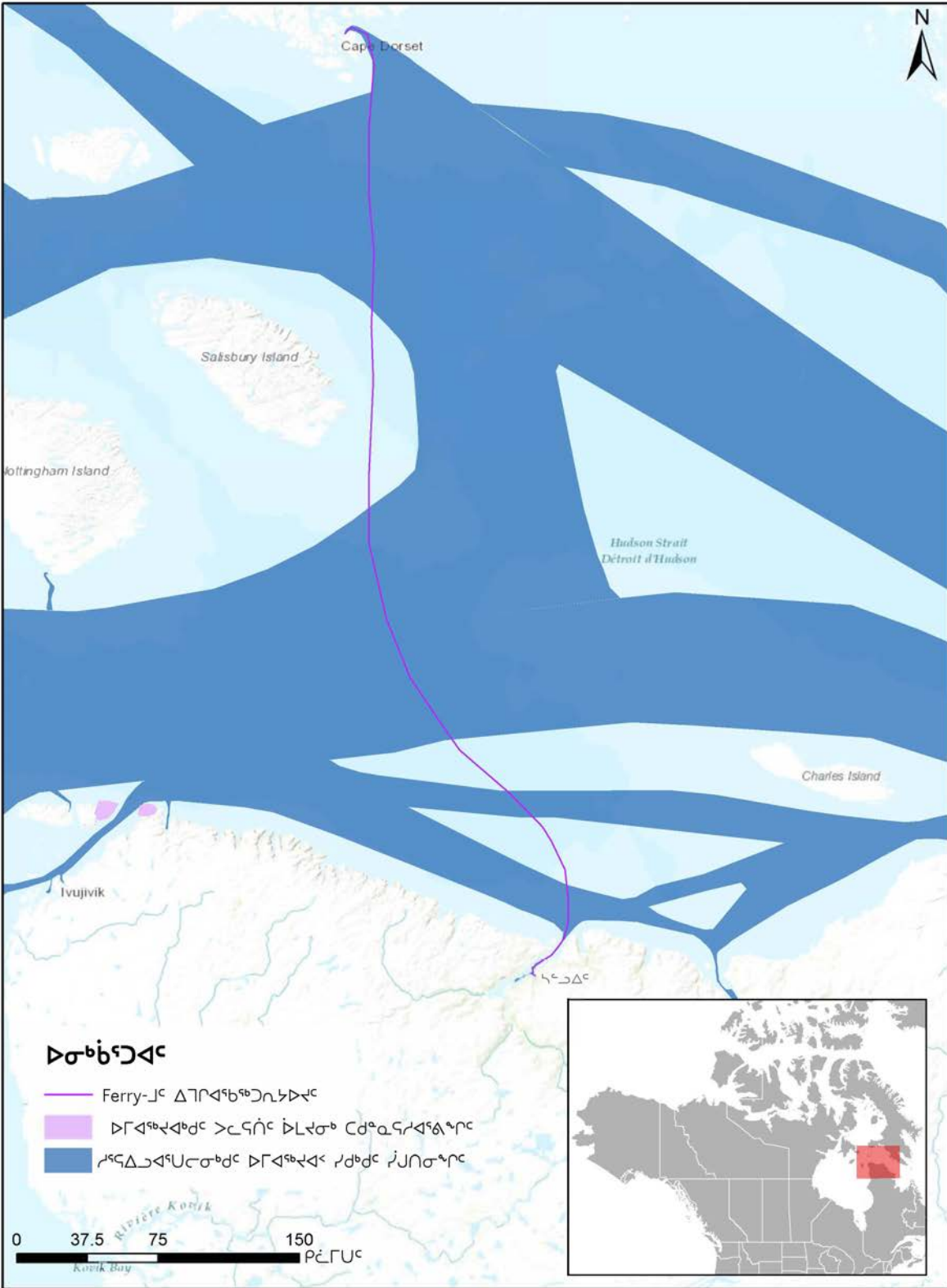


Figure 37. ልገባቸው ይገባሉ ለውስጥ መስመሮች ለውስጥ መስመሮች

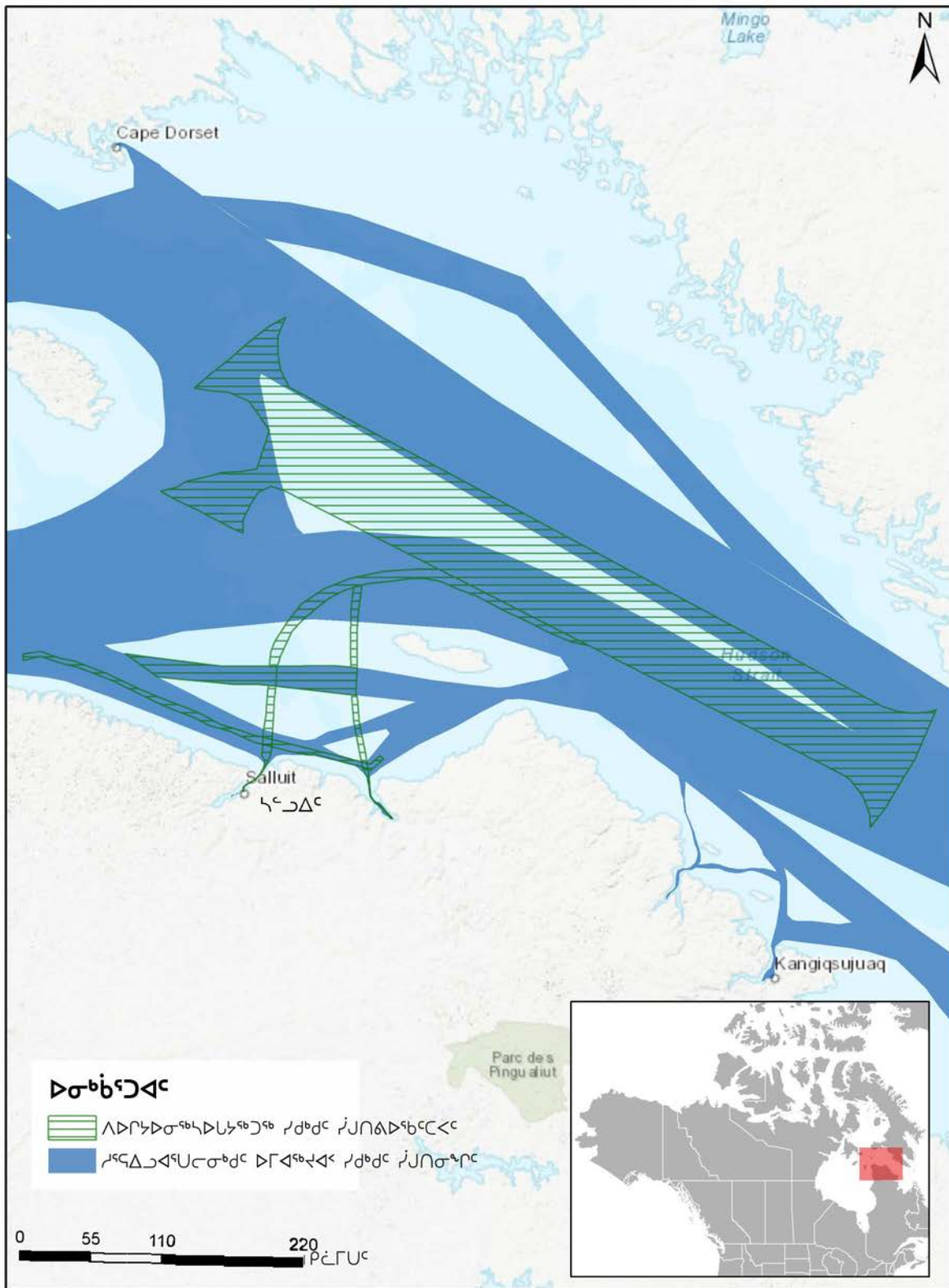


Figure 38. ᐃᑲᑦᑲᑦᓂᑦᑲᑦᓂᑦ ᓂᓂᑦ ᓂᓂᑦ ᓂᓂᑦ ᓂᓂᑦ ᓂᓂᑦ ᓂᓂᑦ ᓂᓂᑦ ᓂᓂᑦ ᓂᓂᑦ ᓂᓂᑦ

